

HELP YOUR PATIENTS FIND THE RIGHT MEDICAL NUTRITION ONS

Optimal nutrition can be transformative.
Find out more about the Abbott range
of products that cater to the different
needs of patients.

Your simple
patient decision
tree

START SCREENING

Early nutritional screening and intervention can lead to improved treatment efficacy,
faster recovery and better quality of life.¹⁻³

DOES YOUR PATIENT HAVE MALNUTRITION AND/OR MUSCLE LOSS?^{4,5}

LOW 'MUST' 0

ONS not indicated

MEDIUM 'MUST' 1

Dietary advice & consider
powdered ONS (check if patients
can access milk and make it up)

HIGH 'MUST' ≥2

Dietary advice, prescribe
ONS & monitor
ACT NOW

'MUST' ≥2 AND SARC-F ≥4

Dietary advice, prescribe
ONS (consider high protein
ONS) & monitor
ACT NOW

CHOOSE THE RIGHT ONS FOR YOUR PATIENT

DOES THE PATIENT HAVE
GASTROINTESTINAL
SYMPTOMS?

YES

VITAL 1.5KCAL

Peptide-based ONS for patients experiencing
symptoms of malabsorption



NO

DOES THE PATIENT
NEED TO INCREASE
STRENGTH?

YES

ENSURE PLUS ADVANCE

High protein ONS with increased vitamin D & HMB, shown
to improve strength and function in malnourished patients*⁶



NO

DOES THE PATIENT
NEED HIGH ENERGY?

YES

ENSURE TWO CAL

For patients with high calorie requirements[†]



NO

DOES YOUR PATIENT
REQUIRE LOW VOLUME?

YES

ENSURE COMPACT

For patients who require low volume[‡]



NO

ARE YOUR PATIENTS
AVERSE TO
MILKSHAKE-STYLE?

YES

ENSURE PLUS JUICE

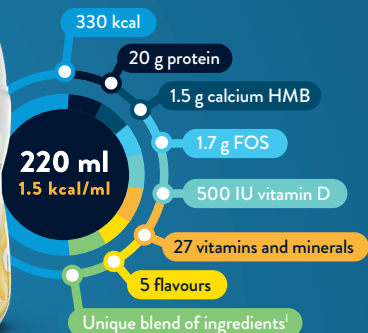
Juice-style ONS for patients who don't enjoy milkshake-style
or want variety of styles**



For Healthcare Professionals only. ONS, oral nutritional supplement; HMB, β-hydroxy-β-methylbutyrate.

* Strength and functionality were measured by handgrip strength in a post hoc analysis of over 600 malnourished people with heart or lung diseases, age 65 or older. Ensure Plus Advance was consumed twice daily for 90 days. † E.g. younger and/or highly mobile patients who may utilise more energy in their activities of daily living. ‡ Clinical conditions where a patient may require low volume include: fluid restrictions, renal disease, liver disease. ** Ensure Plus juice contains milk protein.

References: 1. Pin F et al. *Curr Opin Support Palliat Care* 2018;12:420-426. 2. Tappenden KA et al. *J Acad Nutr Diet* 2013;113:1219-1237. 3. Stechmeller JK. *J Infus Nurs* 2003;26(3):170-1777. 4. Managing Adult Malnutrition in the Community. Sarcopenia: loss of muscle mass. 2021. https://www.malnutritionpathway.co.uk/library/factsheet_sarcopenia.pdf. 5. Managing Adult Malnutrition in the Community. 2021. <https://www.malnutritionpathway.co.uk/>. Accessed February 2025. 6. Matheson EM et al. *Clin Nutr* 2021;40(3):844-849. UK-ENS-2500001 March 2025.

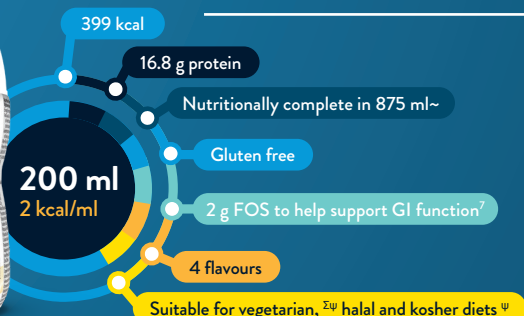
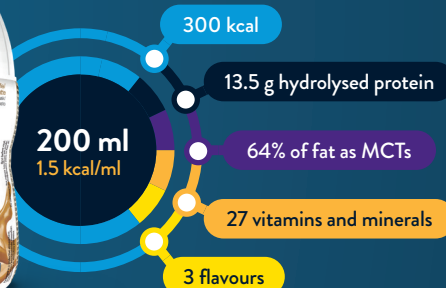


ENSURE PLUS ADVANCE

- A unique blend of high protein, HMB and vitamin D
- Proven to protect and preserve muscle mass and function in older adults^{††#1-3}
- Significantly increases muscle strength and mobilisation rates^{‡3}
- 96% compliance^{†4}
- Flavours: banana, chocolate, coffee, strawberry, vanilla

VITAL 1.5KCAL

- Choose from the best tasting peptide-based ONS^{Δ5} or our ready-to-hang tube feed
- For patients with malabsorption or poor feed tolerance
- 98% compliance^{Φ6}
- Flavours: café latte, vanilla and mixed berry

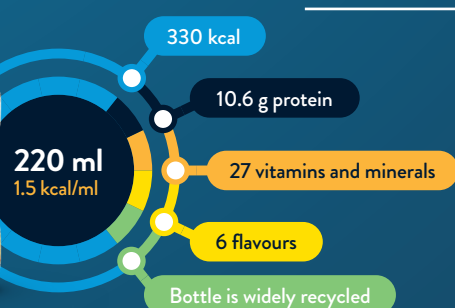
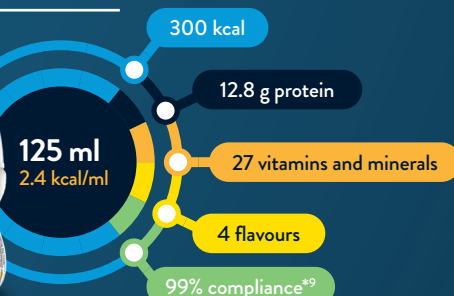


ENSURE TWO CAL

- 2kcal/ml milkshake-style oral nutritional supplement
- High in calories, which can benefit those with increased energy needs
- Flavours: banana, neutral, strawberry, vanilla

ENSURE COMPACT

- Nutrient-dense formula in a low 125ml volume⁸
- Suitable for those who require a small volume
- 99% compliance^{*9}
- Flavours: banana, café latte, strawberry, vanilla



ENSURE PLUS JUCE

- 10% more calories per bottle than other juice-style ONS^{*10-13}
- Up to 36% more protein per serving than other available juice-style ONS^{†10-13}
- Flavours: apple, fruit punch, lemon and lime, orange, peach, strawberry

HMB, β-hydroxy-β-methylbutyrate; IU, International Unit; FOS, fructo-oligosaccharides; ONS, oral nutritional supplement.

[Unique blend is high protein, HMB and vitamin D. ‡As shown in a randomised control trial to investigate the effects of a specialised ONS on older women (≥65 years) who underwent surgery for hip fracture vs. standard postoperative nutrition. Muscle function was measured by handgrip strength. †† Ensure Plus Advance was shown to preserve muscle mass in older patients after hip fracture surgery with rehabilitation, when consumed twice a day for 30 days, as compared to standard care. # Strength was measured by handgrip strength in a post hoc analysis of over 600 malnourished people with heart or lung diseases, age 65 or older. Ensure Plus Advance was consumed twice daily for 90 days, as compared to standard care. Δ Based on independent taste test research involving 108 adults, 8 in 10 people preferred Vital 1.5kcal vanilla flavour over Peptamen Vanilla Bottle and Survimed OPD Drink. Φ Vital 1.5kcal ONS was given to 35 adults twice a day for 16 days. The average proportion of product consumed was 98%. ~ Nutritionally complete for vitamins and minerals in 875 ml (excluding electrolytes, calculated using the UK Reference Nutrient Intake for men aged 19-50 years). Ξ Vitamin D is synthesised from cholesterol, extracted from the grease in wool sheared from live sheep. Ψ Strawberry flavour contains E120 (cochineal) which some people may consider to be a meat product. Strawberry flavour is not suitable for Kosher diets. * Research in 25 adults who were asked to drink 2 bottles of Ensure Compact a day for 7 days. Only 3 out of 350 Ensure Compact bottles were not consumed. † Than other available juice-style ONS: Ensure Plus juice contains 330kcal. FortiJuce, AltraJuce, AYMES ActaGain Juice and Fresubin Juce all contain 300kcal. ‡ Ensure Plus juice contains 10.6g protein/unit, 36% more than AltraJuce (7.8g protein/unit) or FortiJuce (7.8g protein/unit) and 33% more than Fresubin Juce (8g protein/unit). ActaGain Juice contains 11g protein/unit. References: 1. Malafarina V et al. *Maturitas*; 2017;101:42-50. 2. Matheson E et al. *Euro Geri Med* 2016;7(1): S3 abstract 0-010. 3. Ekinçi O et al. *Nutr Clin Pract* 2016;31(6):829-835. 4. Berton L et al. *PLOS ONE* 2015;10(11):e0141757. 5. Data on file. Abbott Laboratories Ltd., 2011 (Taste Test Research). 6. Nelson JL. *Clin Nutr Exp* 2019;28:123-130. 7. Bouhnik Y et al. *Nutr J* 2006;5:8. 8. Data on file. Abbott Laboratories Ltd., 2013 (Ensure Compact Palatability Research). 9. Data on file. Abbott Laboratories Ltd., 2013 (Ensure Compact Compliance Research). 10. AltraJuce (Nutra). <https://nutraltra.com/products/altraJuce>. Accessed February 2025. 11. FortiJuce (Nutricia). <https://www.nutricia.co.uk/hcp/pimproducts/fortiJuce.html>. Accessed February 2025. 12. Fresubin Juce (Fresubin Kabl). <https://www.freseniuskabi.com/gb/products/fresubin-juce-drink>. Accessed February 2025. 13. AYMES ActaGain Juice (AYMES). <https://aymes.com/collections/juicestyle/products/aymes-actaGain-juce>. Accessed January 2025. UK-ENS-2500001 March 2025.

