

NEW HOSPITAL2HOME WELCOME PACKS



Author(s):
Abbott

Publish Date:
September 2025 | 5 min read

Abstract:
We will soon be launching our brand new Hospital2Home Welcome Packs. In this article, we take a look at what patients, families and carers can expect to find in their pack as they make the smooth and seamless transition from hospital to ongoing care in the community.

Abbott’s Hospital2Home service is dedicated to providing a smooth and seamless transition to both adult and paediatric patients as they transition out of hospital and continue their care in the comfort of home or a care home.

An essential aspect of delivering exceptional service to Hospital2Home patients is ensuring that they, as well as their families or carers, have all the information they need to feel assured and well-equipped to manage their ongoing care at home.

Which is why we’re delighted to announce the upcoming launch of our brand new Hospital2Home Welcome Packs.

What’s in the welcome pack?

We have created bespoke Welcome Packs for both paediatric and adult patients. There are also separate versions of each pack for patients who obtain their feeds on prescription and for those who do not.

Each pack contains a selection of useful resources and Hospital2Home reminders, as well as a detailed 'Welcome to Hospital2Home' booklet filled with information and guidance regarding the Hospital2Home service, including:

- How the service works
- The Hospital2Home team
- How to obtain prescribed feeds (if applicable)
- The ordering and delivery process
- Using the Hospital2Home website
- Travel guidance
- Frequently asked questions
- Key contact information

Adult Welcome Pack



- 'Welcome to Hospital2Home' Booklet
- Step-by-Step Ordering Guide
- Travel Card
- Pen
- Keyring*
- Fridge Magnet*

Paediatric Welcome Pack



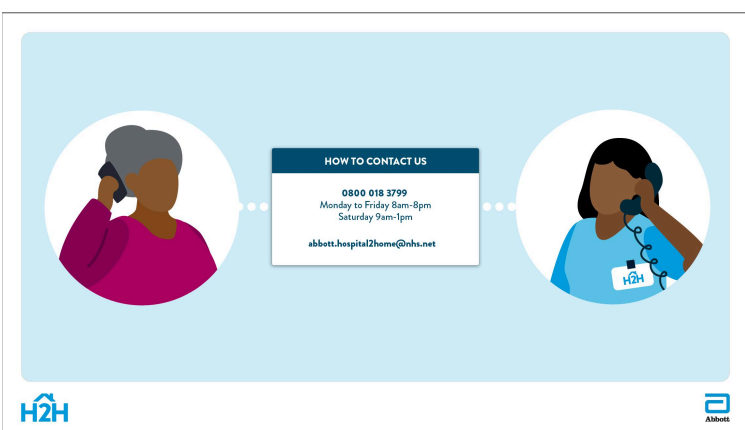
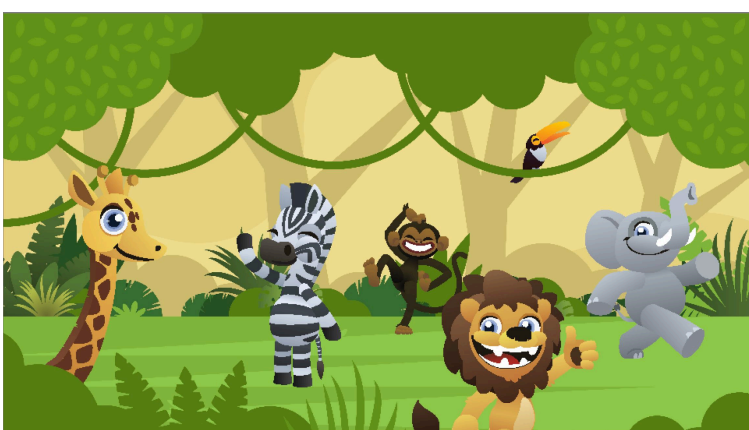
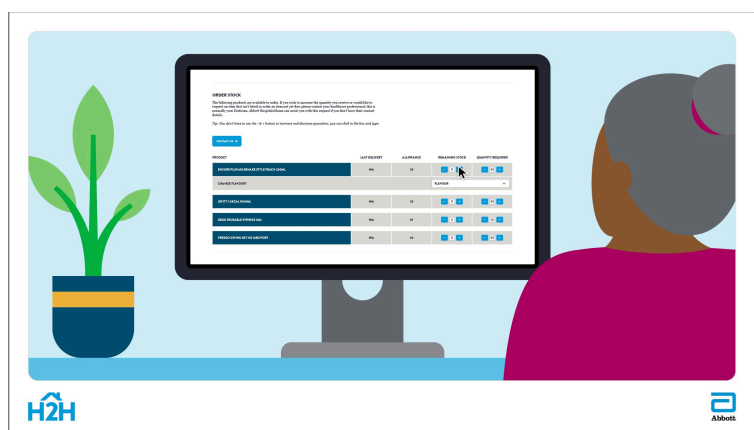
- 'Welcome to Hospital2Home' Booklet (Paediatric Version)
- Step-by-Step Ordering Guide
- Travel Card
- Pen
- Keyring*
- Fridge Magnet*
- Activity Book & Crayons
- Animal Masks
- Stickers

*Including key Hospital2Home contact information for ease of access.

Hospital2Home Video Series

To provide even further support and accessibility for patients, the Hospital2Home website will also soon be updated with a new series of videos. The videos will serve as a supplementary resource to the 'Welcome to Hospital2Home' booklets, providing a step-by-step visual overview of many of the key elements covered in the guide.

The video series will also include a fun introduction to the Hospital2Home service designed especially for children – accompanied by a range of colourful characters.



Abbott is committed to supporting patients in their ongoing care at home. The new updates to our Hospital2Home materials and resources are designed to provide patients with comprehensive, but easy-to-follow guidance - so they can adjust to their new routine comfortably and with confidence.